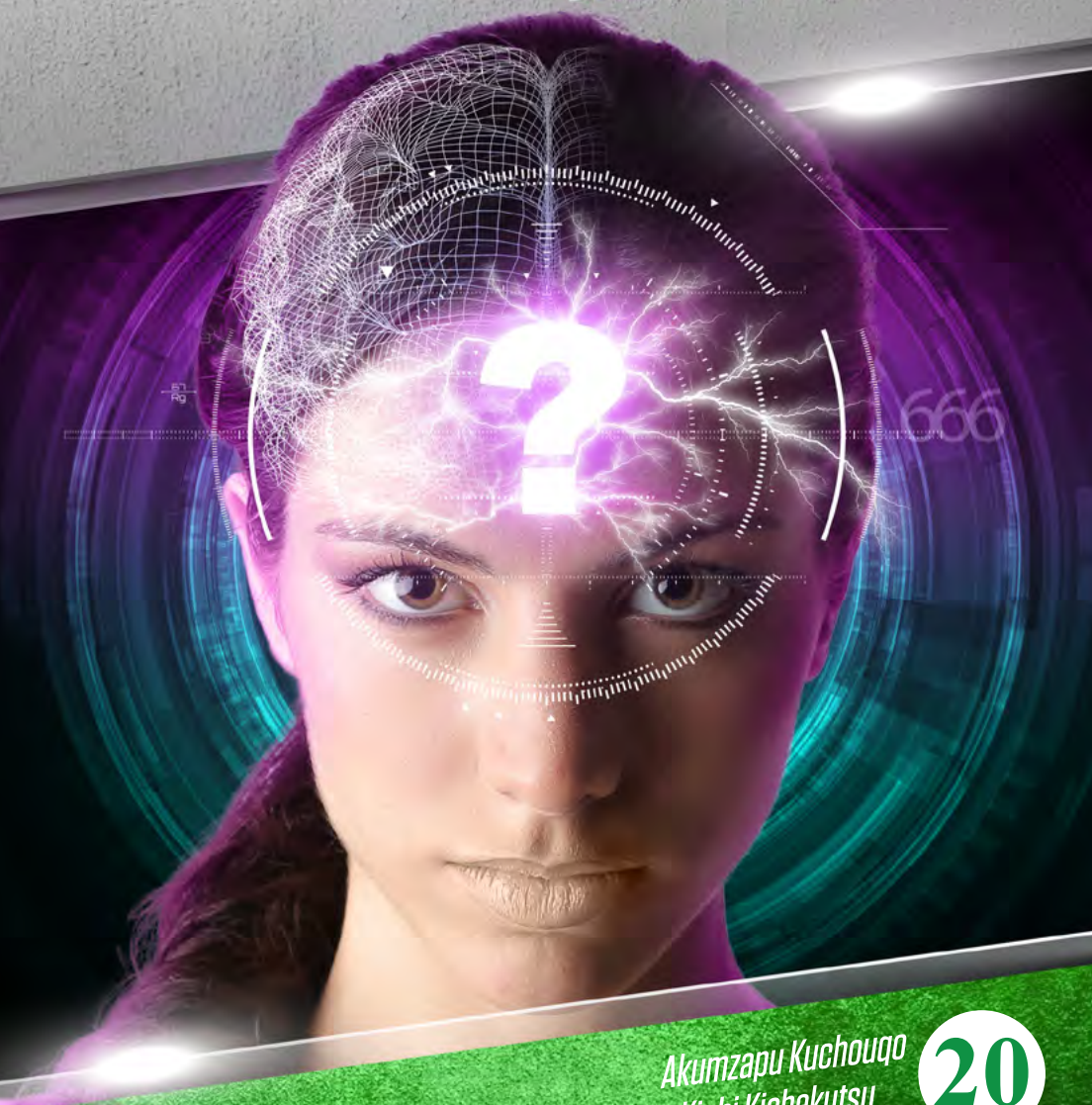


# Tughashi Michipu



Akumzapu Kuchouqo  
Kiphi Kichekutsu

20



## **KUTUGHUKUTSU: Devil (Satan) ye opelo akiphi kichekutsu hipaqo qhoi phikhave penishimonani!**

Aphi aw lo kiuana jutho shisupu momu kiuana yehpuku pukeu, ayiko lo yetamughui hethapukeu. Baibel tungkuputsa lo hitoikeu pebide pimikeu kutomo ani. Ninguye hipaqo ghili vethalumayesakapu avehu shi ani. Hi tughashi michipu kiphi lo ningu ye hami kukumusu buvekepu shimonani, ajehqo tsunani eno lhoxu hami kichephenani. Hitoi keu shikeu ye achipi kumoe, ikemu Alhou ye Pa wu timi kumtsu kimiye ani, eno kumtsu pelo Pa wu kuchou ghili ithipenishi ani. Tighenguno ninguno hipau shimaye save ani. Atsape hipau ye ningu launo kumo, hipau ye Jesu launoke. Tughashi michipu ikhiluve kemiye lhokta thivenani, eno hipau tsape pesu tsumovenikeuye pimi auvea. Tighenguno **Piyekusu 13:1-8, 16-18; eno 14:9-12** lo phi ilomphi zuuno Akimithe Ghungu pelo kuchou kichepiyesu eno vethakulu mulo otsupenike ghenguno inikhulo.

## **Hile kumsukideju kepu lakhi ani**

Akiphi kichekutsu 2 lo Alhou ngo Satan pama dolo kumsapushi kichighikeu ninguno philuvea. Akukupuna hipau ye kungugha lo akukakughushu kungumi lakhi Lucifer ipikeuno Alhou hebidekeu kumla shikeu lono huthuno tiqheli tiqheli lo tishi kupuna ighi ani. Kungumi pa gholo ilo kuqhaluvekemiyo kumtsu sasu kungu-yeghiqha qhasulunenike kichighiju. Ikemu tomlave. Alhou no pa eno pa gholo kusumi kungumiyo kumtsu hapeve. Lucifer huno Satan shive, paye aghakighidemi lakhi shive. Tinguno huthu puzu paye ayeghiqha hipau ghi qhasuluve. Akumugha kumoshi ayeghi lo kughuna kuamiqono ilo pa gholo kuqhano Alhou hebide thuve. Ampeu ghi timiqo vilo ilo Pa gholo kuqhano aghokulu shilo ipi, ikemu Pa ye timiqo pelo panongu pulou lono kishelu penikeu shitsu. Ishi ayeghi hipau lo Alhou laumi shinikeo Satan laumi shinikeno timiqo pelo kishelupenikeu shipuatsu ani. Alhou ngo Satan pama dolo ashekha kichighinikeu ningu zulo ani. Tipau ghili Piyekusu kaku lono ithulu ani. Tungkuputsa lono kiche piyesutsu akeuno Alhou ye tile amichipu (mark) lakhi khikhi Pa wu timi michilukepu ani. Titoi Satan ghi pa wu timi michilukepu michipu lakhi ani. Thosu lo shi ighikeu toi Satan ye ayeghi lo timiqo kuka kukuphu lunani. Piyekusu kaku lono tughashi ipi kichephetsukeu ani. Tughashi tipau no pa michipu ikhiphe nani eno timiqo pelo pa michipu tipau ikhiluvepenani Ishi kiphi kichekutsu hipau lono amichipu tipau ghili kuputsa nani. Puhavekemi timiqo no amichipu tipau ikhiluvenani. Nono amichipu tipau ye kiutoikeu eno kishikeukeno tipau ghili mthanapiaye noye kishi tipau ikhilumoe ipilunikea?



# 1

## Tughashi michipu ipikeuye kiu keno ithinike ghenguno, ningu ye atighi shi tughashi ghili paghi ithimayesae ipi, ike tishiaye Baibel ye tughashi ghili kishi pipuanikena?

**Khokichile: Piyekusu 13:1-8, 16-18** lono tughashi ghilisuqe akiqi 11 lono kimichitsu ani:

- A. Tughashi hipau ye azughi lono ipeghi (**ajo 1**)
- B. Tughashi hipau ghi **Danel 7:2** lo azughi lono tughashi bidi ipeghikeqo gholo lakhi
- C. Dragon no akuka eno ayehkipekuka pesu tughashi hipau tsuve (**ajo 2**)
- D. Tughashi hipau ye akithipu ghuza shive (**ajo 3**)
- E. Ikemu akithipu ghuzaku hu viluve (**ajo 3**)
- F. Tughashi hipau ye alojitsa (political) kuka lakhi shive (**ajo 3, 7**)
- G. Tughashi hipau ye ighono akumto chineh lakhi shive (**ajo 3, 8**)
- H. Tughashi hipau no Alhou kuthatsa piqhi keu lono pimive (**ajo 1,5, 6**)
- I. Tughashi hipauno akimithemiqo sasu aghushi eno panongu theqhive (**ajo 7**)
- J. Tughashi hipauno aqhi 42 ayehpe (**ajo 5**)
- K. Tughashi hipauye ithikutho kikhi 666 pe ani (**ajo 18**)

Akiqi hipaqo lo kiuna kimihikeu anguthi momu awloto kukhayi (ring) ghi anikeshea? Ninguno **Danel 7** lo Khristo ghumi ghili phikelono hipau ghili hami philuve aghiluvi. Ninguno **Piyekusu 13:1** lo tughashi kutau lakhi ajeh Khristo ghumi ipi tsupuaqueu **Danel 7** lono pope wu hiyam, momu pope yehkipe kiquitsu ani. Danel lo eno Piyekusu lo tungkuputsa tsupuaqeqo wo achipilo kithilukeu lono tungkuputsa lo ado aghuloki tsupuaqeqo achipi lo pebidelu cheni. Hi akiqi 11 tsupuaqeqo ashekichishi lakhi khino tughashi hipau ghili phujuni ...

- A. **Tughashi hipauye azughi lono ipeghi ipi (Piyekusu 13:1).** Tungkuputsa lo azughi momu azu ipi akeu kiquye timiqo-timi aqokitikhi kumzapu kughuna akeu yeghi qha kiquitsu ani (**Piyekusu 17:15**) tighenguno tughashi khikhi Khristo ghumi ipi akeuye shiyeh kutomo kughape akeu yeghi qha kiquitsu ani. Kuchou shi pope yehkipe (papacy) ye Europe kulolau shiyehqo shou puthu puani. Tighenguno hipauye tungkuputsa lo pipuaqueu sasu achipilo kithilu ani.

### Hepho piyesutsu keu tsa

Timi kumtsu gihukilenikeu Alhou no ahza tsupuanu (**1 Pitor 2:17**) Ninguno hile kitila chongono Pope yehkipe lono akumla kivi shikeu kitila phujuni. Li no shikipiviki khaqhitsukeyu, mighimi shilukeusami kiphiki khaqhitsu keu, kumulhomi tuchomujo keu a kutotsukeu, kulaumovekemi totimiqo ki kutotsukeu, eno kitekusuu tuchomujotsu chekeu ghenguno ayeghiqha no akishe li tsu acheni. Li ye hitoi amikuchoshi thime kivi kutomo mlatsu acheni. Ikemu aqoaho puthupuaqueu kutamioqo toi li ghi pimikeu kutomo ani. Piyekusu kaku lo lino mlapimi chekeu hami kichephetsu ani. Ampeu, Khiu kumghatsu eno alokughuno tsuchekeu ye khaniloqe sakiyi eno shikithetsukeu ghi shicheni. Nono hi akhoto kipi phi akeulo Alhou Ghungu pelo tamono olo lo kuchou ghili pisutsu penike ghenguno Alhou vilo khulo.





## B. Danel akiyeh 7 lo yehpuakeu lo tughashi hipau ye akutsu bidi shobapu ani. (Piyekusu 13:2)

Hi aqhouno hipaqa ghili phuju eno kimighijuni

	<b>Danel 7</b>	<b>Piyekusu 13</b>
<b>Babylon</b>	abongushuu mihi (ajo 4)	“abongushuu baxa pu (ajo 2)
<b>Medo-Persia</b>	ava mihi (ajo 5)	“ava pukhu pu (ajo 2)
<b>Greece</b>	mihi (ajo 6)	“alhongushuu lakhi toi (ajo 2)
<b>Rommi</b>	akibo chighi pu (ajo 7)	“akibo chighi pu (ajo 1)

Danel 7 lo tughashi 4 tsupuakeqo kumtsu alaghi hami loye Khristo ghumi kumla shikeu ani. Kughengu Pope khiu tughashi ipi nguku akeu yehkiye lo Alhoukumthami kupulu eno pano chineh kukhuayeh pesu ilo Khristo chineh lo pekuqhano tipaqa pulu eno pape achenike ghenguno. Li no aghungu lo phimini tipaqa pepuluve eno hino Khristomi kukutsu ke ipieno pesu ayeghiqha lau pikulhavetsu. “Hile xu-lhe lo akiyeh hami lono hipau ghili yehpuakeu ithulu ani. “Hipaqoye mutsuqheikeu ke. Pope wu hiyam, momu pope yehkiye ye Rommi yehkiye qha lo aqoaho puthu puakeu juno tipaqa pape mla ighikeu shi ani. Tiye Socrates, Plato, eno Aristotle noqo wu phuiko lono athi pithi ipeghikeu papeno mla akeu ithulu ani. Rommian yehkiye kukaqha lo Barbarian eno Byzantine miqo launo nasuighikeu kukhuayeh eno pano kupulu papeluvekeu ani. Ikemu lino li kutoshi tipaqa pesu alaghi kutomo lo iqsive puzu tipaqa ye alholono Khristo chineh lo pepimhe chekeu toi peithauve.”<sup>1</sup> Akiqi hipaqa kumtsu Pope yehkiye sasu achipi lo kithilu ani.


### C. Tughashi (pope) ye Pa kuka, pa yehkiphe lakhu, oking, eno pa yehkipekuka dragon launo ithulu

(Piyekusu 13:2). Dragon hipauye khiukeno kimichilunike ghenguno Piyekusu akiyehdo 12 lo phujuni.

Tile Alhou no Pa do aghuloki ashekhala Pa kukuho pesu tsughukhui keu totimi lakhi kimighi puatsu ani

(Jeremiya 6:2). Akiphi kichekutsu 23 lono hipau ghili kichetsukeu ithulunani) Piyekusu 12 phikelono, akiphi kichekutsu 22 phikelono, Piyekusu 17, eno 18 phikelono ikiqivekeu kukuho pesu aza tuqhalio eno li ngaqo ghili philunani. Tsughukhuikeu totimi hu anga mishibeive, eno pununikeu do tove. Dragon no anga punuqhi kemtsa tsuchunenike ghenguno wo ngokheluve. Anga kipitimi punuve. Pano dragon hu theqhiveno Pa ghuzu shikupuve puzu kungugha lo ikuve. Anga kipitimi tipau ye kutami kumono Jisu ke. Herod no Pa kutsavenike ghenguno Bethlehem phughi kumxa lo anga kipitimi kutomo kutsavetsu (Mathi 2:16). Tighenguno ti dargon ipi akeuye qeti Rommi, Alhoukumthami (pagan) Rommi ke. Tipau ghuloki lo Rommi Herod no tipau qha lo akukau shi ache. Satan khiu vilo devil (Piyekusu 12:7-9) huno Herod kipekulhu puzu pa pelo akichiqhikepu kumla hipaqa shipeke. Satan no pa kumlaqa shikupulovenike ghenguno pa ghinimi kutomo peitha- akhotoshi Alhou kumthami pagan Rommi peitha.

Hile xu-lhe lono ikhisuipheghekeu no akiqi hipau kuphutsuLukepu 2 ani. (1) Rommi kukuho no pakutoshi Rommian kuka a lo ilo ngoluve, eno tamono tishi ngoluve<sup>1</sup>“Pope hu no ilo Caesar theli lo ngoluve”<sup>2</sup> (2) Akughushu Catholic kukuho no Rommian Empire kumlaqa kumtsu peluve. Rommi ye qhoi pekilive. Aqa kukaqha oking pesu Khristomi kukaqha oking shiluve. Achinemi (Pontifex Maximus) hiyam hu pesu pope wu hiyam shiluve<sup>3</sup> Hitoi li w oking eno akuka ye Alhoukumthami pagan Rommi launo ithulukeyu.



#### D. Tughashi hipau ye akithipushi izave (Piyekusu 13:3)

Hi akithipushi izave ipi akeuye, kughou Napoleon wu General Alexander Berthier no Rommi lo ilono 1798 February ghi lono Pope Pius VI kughapesu akughu lo saighivekeno tile Napoleon no ahza shikeu no, itehiye pope thiveake gheguno pope yehkipe ghi kuhavea ipive, Pope Pius VI ye France lono 1799 August lono thive. Europe yeghiqha lo kughuna kuami tuxa ye pope gholono pope yehkipe ghi thivea ipi<sup>4</sup> Tighenguno atsa hipau ghi pope yehkipe lo iloluni.

#### E. Akithipushi izaveku hu viluve, eno ayeghiqha no tughashi hu gihuuve (Piyekusu 13:3)

Viluveke thiu itaghi pope yehkipe hu akichihiqepushi thuuve. Achine – alojitsa (Religious-Political) muqo puthu puakeu lo li no ighono akuka kughushu shi ani, eno ayeghiqha zukusu mta shipe ngo ani.

##### Pope ghili

Ishi ayeghiqha kumtsuno pa ithi ani. Ayeghiqha lo timi kumtsuno paye ighono akumto eno xuvi sakipheu ke ipi ithulu ani. Pano aghakhuqo xuju ighikelo Catholic mi eno Catholic kumomiyo kumtsu no pa lau kumuqo ighi cheni. 2015 mpelo US. Congress wo kuhokumuqo kelo pano aqoaho hitoikeu zulo ipeghieno atsa pikeu hino xu-lhe lo atighiyo ipi.

##### Pope yehkipe ghili

America mi lashika lakhino pikeuno Vatican ye “ininishikeu hiyam lakhike”<sup>5</sup> ipi Pope kukano pughu eno kughu akeuye pano ayeghiqha qhasulunenikeu lo sachen. Mutsuqheino izaveku hu viluvea, eno shiyeqo kumtsu panongu nhethi pilepe Vatican shou jupuku auvea. Baibel tungkuputsa lo kiu pipuanikeno tikumtsu shikupu auvea.

#### F. Tughashi hipauye alojitsa kuka ighono akumto lakhi shivea (Piyekusu 13:3, 7).

Kunguu akiqi E lo julo.

#### G. Tughashi hipauno Achine lo ighono akuka kughushu lono aqoaho lakhi puthuluvea (Piyekusu 13:3, 8).

Kunguu akiqi E lo julo.

#### H. Tughashi hipau no piputhakeu tsa piqhikeu lono axine shive (Piyekusu 13:5, 6).

Pope yehkipe lono piputhakeu kipimi kumla shive, kughengu li chinehmiqo no timiqo xine kipimi qhivetsukeu kumla shi eno pope noqo no panongu ye Khristo ke ipi pukhaveke ghenguno.

#### I. Tughashi hipauno akimithemiyo sasu aghushi eno panongu shikighimeve (Piyekusu 13:7).

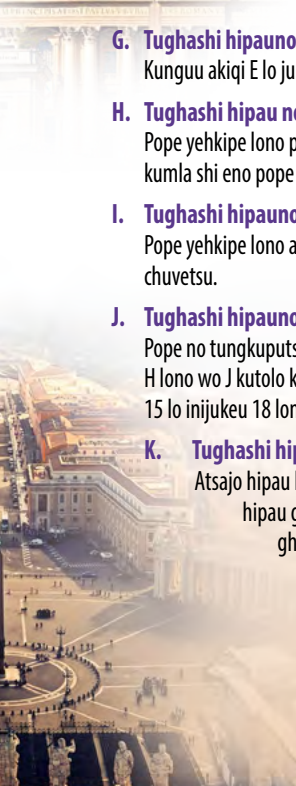
Pope yehkipe lono akimithemiyo shikighime eno akuzu tiqheliyo ghuloki lono akimithemi kumzapu kuxu chuvetsu.

#### J. Tughashi hipauno aqhi 42 ayehpe (Piyekusu 13:5).

Pope no tungkuputsalo aqhi 42, tiye ampe 1,260 AD. 538 lono wo 1798 kutolo ayehpe Akiqi point H lono wo J kutolo kumlaqo ye pope kumla sasu achipi lo kithilu ani. Ninguno Akiphi kichekutsu 15 lo injukeu 18 lono kishekulu philuveake ghenguno hilehi ye ikholhoi likhi tsuani.

#### K. Tughashi hipau ye ithikutho tuqhou kikihiki 666 pe ani (Piyekusu 13:18).

Atsajo hipau lono pi akeuno, “hipauye timi lakhi w kikihike” eno Piyekusu 15:2 lono hipau ghili pi akeuno, “hipau ye timi lakhi jeh kikihiki ke” Nono pope yehkipe ghili kumsuju kelo paye kiutoikemi timiepi noye kumsulu ania? Ningu ye



pope ghili kumsuju acheni. Pa wu hiyam jeh ye kiukea? Hile Catholic mi lakhi no yehpheku ani. "Rommi lo pope yehkipe lakhu ye Vicarius Filii Dei" kimiyemi tsa lono pebidetsuke ye "Alhou Nu a lo ngono mla akeu"<sup>6</sup> Malachi Martin, in *The Key of This Blood*, uses the same title for the pope on page 114. **Piyekusu 13:18** lo Pano w Baibel Douay Version lo pi akeuno, "Pa jeh kikihi huno akikihi hipau ke" ipi yehpuani. Nono ow ajeu kudau ju aye ti ithulunani. Ninguno Rommian kikihi kiqu lono pa jeh kihiju aye akikihi hipau kihiphelu ani. Hi ithilo: Rommian kikihi lo U ngo V pama ye akikihi athoshi 5 kihicheni, tipau kiqu lono kihipuanike akivishi jukutolo. Akikihi hipau ghi pope w hiyam sasu kithilu ani. Tughashi khikhi amichipu (mark) pe akeu ye pope yehkipe ke.Xu-lhe lo kiu kuka nomu hi akiqu 11 tsu akeu sasu kithikulupu (fit) shikulupu kuha. Ninguno suchouno tughashi ye khiukeno kimichi phevea. Ninguno li michipu (mark) eno li yehkipekuka (authority) kiqu ghi phupheluvea. Itehiye ninguno Alhou yehkipekuka (authority) michipu phujuni.

- <sup>1</sup> André Rétif, *The Catholic Spirit*, trans. by Dom Aldhelm Dean, Vol. 88 of *The Twentieth Century Encyclopedia of Catholicism* (New York: Hawthorne Books, 1959), 85.
- <sup>2</sup> Adolf Harnack, *What Is Christianity?* trans. by Thomas Bailey Saunders (New York: Putnam, 2nd ed., rev., 1908), 270.
- <sup>3</sup> Alexander Clarence Flick, *The Rise of the Mediaeval Church* (New York: Burt Franklin, 1959), 148, 149.
- <sup>4</sup> Joseph Rickaby, "The Modern Papacy," *Lectures on the History of Religion*, Lecture 24, (London: Catholic Truth Society, 1910).
- <sup>5</sup> Malachi Martin, *The Keys of This Blood* (New York, Simon & Schuster, 1990)
- <sup>6</sup> "Answers to Readers' Questions," *Our Sunday Visitor*, Nov. 15, 1914, p. 3

## 2

### Alhou yehkipekuka michipu momu kichekutsuye kiu kea?

"Ino I wu Sabbathqo pesu panongu tsuvea, ningu dolo amichipu (sign)

lakhi shi qhipuachenike ghenguno, tshikeu lono panongu pelo Niye panongu shikimithetsu keu Ampeu ke ipi ithichepenike ghenguno" (**Ezekel 20:12**). "Hino Israel nuli I kujo dolo pulhapuyu amichipu (sign) lakhi shi qhipuachenike, kughenguo Ampeu no atsala tsugho lono kungughaqo eno ayeghi mlake" (**Ipekulu 31:17**) "Pano aphiyuyiko tsakeu michipu (sign) ikhilu, tiye pano aphiyuyiko tsamphi zuuno akupulu qhipuachekeu mikuchu michipu (seal) lakhike, tshikeu lono paye akupulumiqo pa pu shilupeke. Panongu ye aphiyuyiko tsamphi zuonomu panongu pesu amikuchoke ipi kihisuluveke" (**Rommi 4:11**).

**Khokichile:** Atsajo hipau lono Alhou no pi akeuno, Pano Ihophekulupu kuka akeu kiqu lono, tsutsala ninguno amulo pebideveno Pa lau xaide ighive aye Pano shikimithe tsukeu kuka akeu michipu lakhi shinike ghenguno ningu pelo pinyi chepenike atsala lakhi Sabbath pesu ningu tsupuani. Baibel lo atsa seal, sign, mark, eno token ipi akego kumtsu akiqu lakhi kemu kivekutsughu peitha cheni. **Bothubo 17:11** pesu **Rommi 4:11**, **Piyekusu 7:3**, **Ezekel 9:4** kimighijulo. Alhou wu amichipu (seal) pesu Pa ye Alhou, ayehekipe kimithe kuka pighiakeu, eno Pano Xachilekuluu ke ipi pephe piyetsutsu akeu michipu lakhike. **Piyekusu 7:1-3** lo pi akeuno, "amichipu hipau pesu I wu timiqo kishelo chishi pukutsulo" ipi. Tipau kiqu ye amichipu Sabbath kuchou ghili pesu Alhou wu timiqo qhoahji lo eno panongu kukumusulo sutsulo pike (**Ibrimi 10:16**) Pa wu timi ipi akemiyo ye Pa wu ghushoghili pepu chekemioke. **Ibrimi 4:4-10** lono shikumtotsu akeuno, kughou ninguno Pa kulhokiqhi (xachilekulu) lo iloghinikeno tilehi ye ningu ye Akimithe Tsala Sabbath pesu ningu xaphekulu eno qhuchilekulu michipu lakhi shi pinyi chenani. Sabbath tsala pinyi chekeu kiqu kuchou ye timi lakhi no pa kuxu eno thokha kumtsu pesu Jisu Khristo lau tsuveno Jisu no khilau sasu wunikeno tilau Pa papesu wunike puloluvekeu michipu ke. Sabbath akimitheshi pinyi keuno Alhou yehkipekuka (authority) eno Pano Ihophekulupu kuka akeu michipuke ipiveake ghenguno Akuka hipau khu akeu (challenge) shi akeu tughashi ghi pa kuka kua michipu lakhi qhiniepi atsala lakhi puthupe qhipuaghi nani. Ninguno atsala hipau ghili ghi phujuni.

V	=	5
I	=	1
C	=	100
A	=	0
R	=	0
I	=	1
U	=	5*
S	=	0
		112

F	=	0
I	=	1
L	=	50
I	=	1
I	=	1
		53

D	=	500
E	=	0
I	=	1
		501

TOTAL	112
	53
	501
	666

Rommian kikihi lo U ngo V pama ye akikihi athoshi 5 kihicheni, ...



# 3

## Pope yehkipekuka michipu momu kiche piyesukeu ye kiuepi kea?

**Khokichile:** Catholic Catechism lono ikhipheLuku kiyeh hami phujuni:  
**Inijukeu:** Akukuhou ye tiqhetini yehza mlalunani ipikeu noye kiu lono phuphetsulu nanikea?

**Khokichile:** Li lau hitoikeu kuka kuha, ikemu ishi tiqhelimiyo chineh lo kumlamiqono li gholo pulosukuqhatsu keu lono- li no apineh dolo atsala atighiu Sunday pesu akutsunini Saturday zuqhu lo pinyi nikeushi ayezha tsughasuvea, eno kuchouno pinikeuye tile Kuchoyesu lo hitoi kilivekeu yehpekuka (authority) kuhake.<sup>7</sup>

Hile pope wu hiyam no pi akeuno, "akikili" Sabbath pesu Sunday lo kilisuvekeuye akukuhou kumtsuno akimithe tsala akitheu lakhi ikhiluvekeu ke ipi ani. Pope wu hiyam no piakeuno Sunday pesu akimithe tsala lakhi shieno pinyi akeuno li kuka (power) eno li yehkipekuka (authority) michipu lakhike ipi pukha ani.

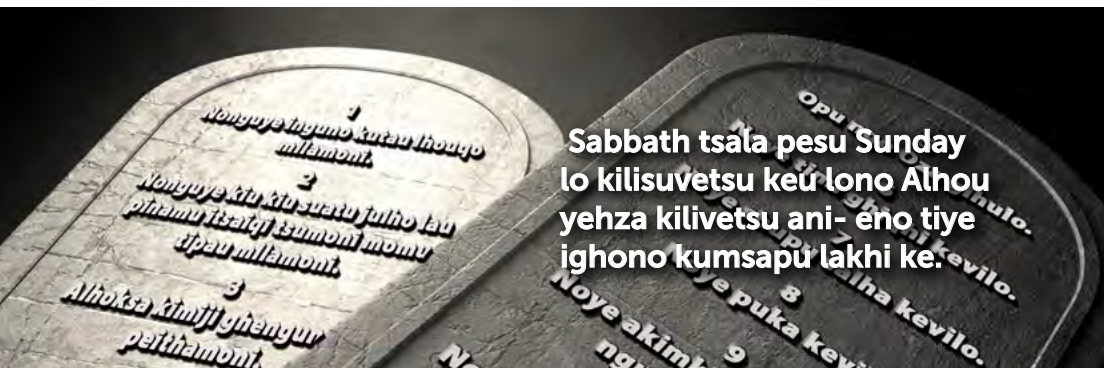
<sup>7</sup> Stephen Keenan, A Doctrinal Catechism (FRS No 7), (3rd American ed. rev. New York: Edward Dunigan & Bro. 1876, 174

# 4

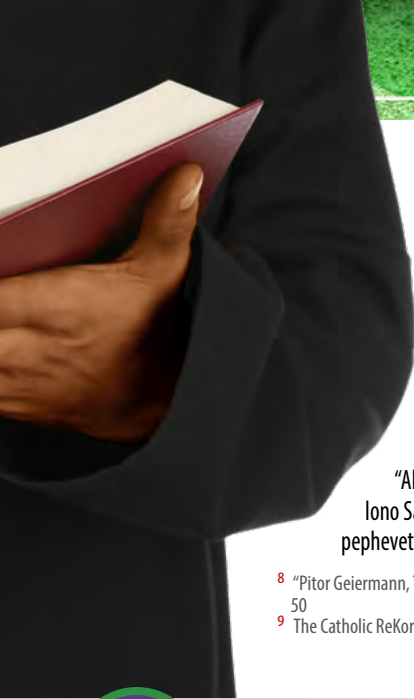
## Alhou ye ighinikeu lo hitoi akikili sughive nani ipi tungkuputsa lo pichho puanikeshea?

**Khokichile:** Iye. **Danel 7:25** lo Khristo ghumi ghili pi akelo, Alhou no pikeuno hipau no "adoqo eno ayezha kilivenike kutonani" ipi puani:

- A. Pope wu hiyam momu pope yehkipe lono kishi Alhou yehza kilivenike kutokea?** Alaghi kuthu lono: Li wu Catechism lo li no (1) Ahzakutsu akiniu lo ajulho kumllaqo ikhiLukvilo ipi puakeu zahkatutau hu ikhivhe, eno (2) ahzakutsu abidiu lo tsathiqo pekughukhovetsu. Atsathi 94 pekughukhops atsathi 8 lo suvetsu. Sabbath zahkutsu (**ipekulu 20:8-11**) lono mutsumishei Sabbath no apineh dolo atsala akutsuniu Ampeu Alhou tsalake ipi kimichitsu ani. Pope wu hiyam no hitoi kilivetsu puzu pano zahkutsu hitoi phisu ani, "noye Sabbath tsala akimitheshi pinyi lo" ipi. Hitoi pi eno yehpheve puzu kiu kiu tsala lomu pinyilu nani ipi acheni. (3) tishi puzu ahzakutsu achighiu pesu kikije kini shivetsu.
- B. Pope yehpe lono kishi Alhou doqo kilivetsukea? Alaghi kini lono:** (1) Li no akumlla tsala akutsunini Sabbath pesu atighini Sunday lo kilisuvetsu (2) itaghi li no Sabbath tsala hukuthu eno kikishekha do hu kilivetsu. Friday avelau khetsunhe ilovekelono wo Saturday avelau khetsunhe iloveke kutolo Sabbath tsala pinyi nikeu zah ani. (**Achine 23:32**) Ikemu li no Alhoukumthami Pagan Rommian chineh kukhuayeh papeve puzu Saturday putho mta lono wo Sunday putho muta kutolono atsala lakhi shinikeu shi kihithuve. Alhou no tughashi momu Khristo ghumi no hitoi akikili sughivenani ipi pichho puatsu keu hu li no shikupu ani.



**Sabbath tsala pesu Sunday lo kilisuvetsu keu lono Alhou yehza kilivetsu ani- eno tiye ighono kumsapu lakhi ke.**



### Catholic Catechism lono yephekeu hami pekithitsu ani:

**Inijukeu:** Khikhiuno Sabbath tsalakea?

**Khokichile:** Saturday no Sabbath tsala ke.

**Inijukeu:** Tishi aye ningu ye kushiye Saturday zuqhu lo Sunday pinyi acheni kea?

**Khokichile:** Ninguno Saturday zuqhu lo Sunday pinyi acheni, kughenguo Catholic kukuhou no akhoto tsala Saturday pesu Sunday lo kilisuveake ghenguno”<sup>8</sup>

### Hile Catholic mino pikeu kutaughi ani:

“Akukuhou no Baibel nguno akiqheu ke; eno tighenguno akukuhou no Saturday lono Sabbath pinyi kepu zuqhu lo pekilipesu Sunday lo suveake ipi suchouno pephevetsu ani”<sup>9</sup>

<sup>8</sup> Pitor Geiermann, The Convert Catechism of Catholic Doctrine (St. Louis B. Gerder Book Co. 1957 ed.) 50

<sup>9</sup> The Catholic ReKorind (London, Ontario, Canada, Sept. 1, 1923)

5

## Kishieno timi lakhi kukumusu kivi lono Alhou kimithe tsala pekilive kulupu shilukea?

**Khokichile:** Ninguno hipau ghili Pope wu hiyam injuni: “Noye kuchouno Sabbath pesu Sunday lo kilisuveke shea? Li no khochile “Iye, ninguno ke.” Hipau no ningu wu amichipu (mark) ni yehkipekuka (authority) eno akuka (power) akeu michipuke.” Ningu no inju, “Nongu ye kishiye lono hikithipu kumla shinikeu kumsuphelukea?” Hiye ighono akhoto injukeu lakhi ke. Pope wu hiyam no pano hiyam tsa shi ghi Protestant miqo vilo ighono akhotoshi inju ani. Hipaqo ghili ighono amulokutsu shieno lotsuloghui shi phijulo:

“Nono Saturday ye Judahmi wu Sabbath ke ikemu pesu Khristomi wu Sabbath Sunday lo kilisuveake ipi. Tiye khiuno kiliveke? Akughushu Lhou no ahza tsupuakeuye khiuno kilivekulupu kea? Alhou no timi vilo, noye akimitheshi akutsunini pinyi lo ipi puakeu lo khiuno pa mulo kumtoshi puzu, moe, akutsunini akumla shilo eno ayeghi lo kilhikishi kumlaqo kumtsu shilulo, eno tipau zuqhu lo akimitheshi atighini (sunday) pinyi lo ipilukea? Hipau lo noye kishi khochilenani keno niye mtha. “Noye Protestant mi lakhi, eno noye Baibel eno Baibel likhi papeni ipi shukiphe shipuani; apineh dolo atsala lakhi ye ighono akimitheshi pinyi mayesakepu akhoto shi ani, ikemu noye Baibel lo tipau ghili qhaqhilei yehpuakeu kiyeh hexave ani, eno atsala kutau lakhi pesu Baibel no ahzatsupuakeu zuqhu lo suveani. Atsala akutsunini akimitheshi pinyi lo ipikeu ye ahzakutsu chighi gholo lakhike; ahzakutsu toku ye ishikutolo pape akeu yehza shi apho ipi cheni, tsutsala nono Baibel eno Baibel likhi papeni ipi aye noye Puloshohqi Akitheu lo ahzakutsu abidiu kilivekeu tsajo ikhiphesaghilo”<sup>10</sup>

Angkusashi Catholicism eno protestantism pama kinikujo Alhou wu Sabbath khikhi Alhou yehkipekuka (authority) michipu eno Pa wu jumichi (identification) hu ikhilunikeu tuchileve acheni.

<sup>10</sup> Library of Christin Doctrine; Why Don't You keep Holy the Sabbath Day? (London Burns and Oates, Ltd.), 3, 4).



## 6

### Alhou ye Pa zahkutsu, Pa michipu (sign) ghili lo kishi kutughu puatsu anikea?

**Khokichile:**

- A. Achine lo sakiphemiqo no ahzakutsuqo lo hami ye papemopimu kiumo kumoe ipi kutsukeu lono timiqo pukhu pusuvetsu akeu ghenguno Alhou no panongu lau hi kutughutsu ani (**Malaki 2:7-9**) Kichekipiye lakhi: Akukutsumi hamino kutsukeuno, “noye kiu kiu tsala pimu akimitheshi pinyilu nani” ipi kutsu cheni.
- B. Khiunoqo no pano kukutsumi pelo Alhou yehza lo kuchou ye qhive puzu pano puluo khisaqo xapiyesupenishi chenikeno Alhou no timi titoikemiqo lau kutughutsu ani (**Isaya 30:9, 10**)
- C. Khiunoqo no Alhou yehza lo kuchouqo ini nishimono pano mulo mkamughhai achenikeno tipaqo lau Alhou no kutughutsu ani (**Zekharja 7:12**).
- D. Timiqo no Pa zahkutsu tuchilevetsu eno pekilivetsunike pukaputsa chekemiqo shou Alhou no ahakusapu puatsu cheni (**Isaya 24:4-6**).
- E. Alhou no Achine lo kukutsumi khiunoqono ashekha ghuloki ghili tungkuputsaqo lo tsupuaekeqo kutsunike tuchileve chekemiqo lau kutughu tsu ani (**Isaya 29:10, 11**).
- F. Akukutsumi khiunoqono Alhou tsala akimithe Sabbath ngo aqo lono pinyi chekeu Sunday kuma dolo kuchou kutuqu akeu ghili pesu kutsumokemiqo pelo Pa loghukighide makho pupenikeu kutughutsu ani (**Ezekel 22:26, 31**).

## 7

### Piyekusu 13:16 lo tughashi michipu akishe lo momu aw lo ikhiluve ipikeu ye kiu kiqikea?

**Khokichile:** Akishe (forehead) ipi akeu kiqi ye akukumusu (mind) pi ani (**Ibrimi 10:16**). Timi lakhi no pa kishhe lo tughashi michipu chishipuve ipikeu kiqi ye pano Sunday akimitheshi pinyi nikeu xathaluve eno ikhiluvekeu pi ani. Awu lo chishipu ipi akeu kiqi ye akumla shikeu pi ani (**Yetsapiu 9:10**). Timi lakhi wu lo amichipu ikhiluvekeu kiqi ye Alhou kimithe tsala Sabbath Saturday lo akumla shikeu, momu pano Sunday yehza pesu pano abolomi asholokumi dolo akumtoshi peithakeu pi ani. Alhou michipu chishikeu (seal) shi aghie pina tughashi michipu (mark) shi aghie pinamu timi lakhi shou aju ithulughi chishipukukeu shimonani. Nono Alhou wu Sabbath pinyi cheghi aye noye Alhou michipu ikhilo ani-nono Sunday pinyi cheghi aye tughashi michipu ikhilo ani. timi shou amichipu tipau chishipu akeu timi nhethi ye ithulumo nani. Alhou likhino khiu kishelo kiu michipu chishipu anikeno ithi ani (**2 Timothi 2:19**).



8

## Isaya 58:1, 13, 14 lo ashekha tsalaqo lo Alhou ye kiutoikeu tsape pesu Pa wu timiqo tsuniepi kea?

“Ighono igha lo, kiumu qhivekevalo, afuko lakhi ghugha toi asutsa

suqhelo, I wu timiqo lau panongu xineqo kichephetsu lo ... tsutsala nongu no nongu pukhu napa sukiqesu I Kimithe Sabbath lo ighiveaye ... nongu lokughuno launo xaidesu I kimithe tsala lo ighive aye, eno Sabbath pesu azukuvu tsala lakhi shiluve aye ... tishi aye noye okutoshi Ampeu lau azukuvu shi anike” (Isaya 58:1, 13, 14).

**Khokichile:** Pano Pa wu timiqo vilo pikeuno, panonguno Pa wu kimithe tsala Sabbath hexavetsu, qodanedavetsu chekeu qhiveno Pa lau xaide ighivelo tishi aye panongu kumughatsuni ipi. Pa tsapemiqo pelo hipau tsape pesu ashekushu sutsa kije lono timiqo pelo chilupekeshu pitsulopi ani.

**Piyekusu 14:9-12** lo kungumi akuthuu no tughashi michipu ghili pesu pikulhatsu ani, asutsa kuloghi lono asheshu ani (ajo 9) Atsape hipau ye ighono akhoto tsape lakhi. Hiye akithi akuxu tsape lakhike! Jisu no pikeuno, Pa wu bheriqo- Pa wu timiqo ye Pano panongu kukelo panongu ye Pa sutsa chilunani ipi (Johan 10:16, 27).



1  
Nonguye Inguno kutau  
Ihouqo millamoni.

2  
Nonguye kiu kiu suatu julho  
lau pinamu itsarqi tsumoni  
momu tipau millamoni.

3  
Alhoksa kimiji ghenguno tjo  
peithamoni.

4  
abat tsala ikhile... no tipa  
akimthe shi perulo.

9

## Itehi akimitheshi Sunday pinyi chekemiqo ye tughashi michipu ikhiluveake shea?

**Khokichile:** Khilemu kumoe! Sunday akimitheshi pinyi lo ipi aeyeha tsughasu mphu kutolo timi khiumu tughashi michipu ikhilumphu. Ado aghuloki tipau ighikelo khiunoqono tughashi kichileu kukutsu ikhilu puzu Sunday pesu akumlla tsala shinikeno- tughashi no akimithe tsala mlape qhikeu ikhilukemiqo ye tughashi michipu ikhiluveake. Khiunoqo no Jisu pape eno Pa wu kuchou ikhilu puzu akimithe shi Sabbath tsala pinyi chenikeno timi tipaqo no Pa michipu (mark) ikhiluvekemiqo ke. Tughashi michipu ikhilumopi tuchilevekemiqo ye Jisu w Sabbath michipu qholo checheghinani. Pa ghokulumiqo ye Pano akuka tsunani (Apostolmi 5:32). Pa sumokeloye ningu ye kiumo shimla (Johan 15:5) Pa gholono thokha lo tokulupu ani (Mark 10:27).



10

## Piyekusu kaku kigi lo Alhou w lhokta kukaqha lo Johan ye khiunoqo ithulukea?

**Khokichile:** Khokichile hipau lo thime kuthu kuqhape ani, eno tipaqo ye ighono mutsumishei ani:

- Khiunoqo no Alhou michipu (mark) pe anikeno- amichipu (sign) tiye Pa wu Sabbath- panongu kishelo, tiye panongu qho lo, panongu kukumusu lo xapu ani (**Piyekusu 7:3, 4**).
- Tughashi eno pa julho (image) ikhilumopi tuchilevekemiqo, khiunoqo tughashi michipu momu pa jeh kikihi ikhilumopi tuchilevekemiqo (**Piyekusu 15:2**).
- Timi khiunoqono – ishi eno lhokta- Jisu pape chekemiqo, thime kumtsu qhoi qhiveno Kuchou pape chekemiqo (**Piyekusu 14:4**).



11

## Jisu ye Pa khopemiqo vilo kiu pikea?

**“Khiuno l papenikeno paye akuzu lo cheghimonani, ikemu akuxupu kuvu pape cheghinani (Johan 8:12).**

**Khokichile:** Tsutsala ninguno Pa papeluaye Pano akichiqhikepu tushokiqhi lakhi ningu lau piqhi puani, ningu ye akuzu lo checheghimonani, ikemu kuchou jukuvu lo checheghinani ipi. Tighenguno Pa papelo, eno Pa wu Sabbath akimitheshi pinyi puzu ningu kishelo- tiye ningu qhoahjilo ningu kukumusu lo Pa michipu (seal) qhiluni nolo. Hipau likhino akithipu pusa ighikelo ningu susholonanike (**Leshele 91:10**). Pusa tipaqo ye Alhou gholumokemiqo shou lepukunani (**Piyekusu 16**) Amichipu hipau pucheghikemi likhino Jisu ighikelo pebide sasu Pa gholo wulunani. Alhou no hitoi ningu tsuni ipi piqhipuakeu ye kiutoi kuchou eno sukushopu lakhi kela!

**Putsupuloi shieno huqhe kepu lakhi kutughutsukeu**

**Piyekusu 14:6-14** lo akiphi kichekutsu 9 gholo 3 lono kungumi kuthu tsape tsupuakeu philunani. Akiphi kichekutsu hipaqo lono hipaqo ghili hephopiyesu puatsu ani: (1) Ashekhau kukupuna lo United States no kiu mlanani keno kiche piyesutsu ani (2) Ayeghiqha lo akukuhouqo eno Achineqo no kishi ilo chhosunani keno kiche piyesutsu ani (3) Ayeghi lo aghushiqha ashekhau lo ayeghi bekutha ye kiulo ananikeno kichepiyesu puatsu ani. (4) Satan no ayeghiqha lo timi kihikhakumla pishiqhilunikeu muqusuqe kutope akeu lo Pope yehkipe lono Sabbath pesu Sunday lo kilisuvekeu ye pano kumla ke ipi akeu lo Protestant kukuhouqo ye kiu kishi khochilenani keno hi aqhouno kiche piyesutsu ani.

12

## Alhou no inju akeuno, noye Pa kimithe tsala akutsunini Sabbath pinyi keu lono amichipu lakhi shi ikhilu puzu Pa wu xachilekulu lo iloghieno Pano khilau sawunikeno Pa pape lo pi ani. Tighenguno noye Sabbath pinyi nikeu Xakuthami shilunanima?

**Nono khochilenikeu:**

# Akukuhouqo launo eno ayehkipekuka (authority) kutamiqo launo Sabbath ghili ashepe tsu-akukumusu tsukeu yehpithitsu ani:

**Baptist mi no pi:** "Tilehi Sabbath akimitheshi pinyi lo ipi keu zahkutsu ache, eno ani, eno Sunday ye Sabbath tsala kumoe. Tishi aghie pinamu hile yehphetsu akeuno, tile timi hamino ighono tokulu shipuzu Sabbath tsala apineh dolo atsala akutsuniu pesu atighini lo kilisuvetsu. Hipaqo ghili Yekikithikeu ye khileno ithulunani kea? Puloshoghi Akitheu (New Testament) lomu khilemu kuha. Akutsunini Sabbath pinyi cheku zahkutsu hu pesu apineh dolo atsala atighini lo kilisuvetsukeu ye Kuchoyehsu kiu lonomu kimichitsu kuha" (Dr. Edward T. Hiscox, Author of The Baptist Manual, in a paper read before a New York Minister's Conference held Nov. 13, 1893).

**Catholic mi no pi:** "Nono Baibel Bothubo lono wo Piyekusu kutolo phijukelo tile atsa jo lakhimu Sunday shikimithetsu keu ithulumonani. Kuchoyehsu (Scriptures) lono Achine lo pinyi nikeu tsala ye Saturday tsupuanu, eno atsala tipau ye Catholic ye khilemu shikimithe tsu puamo" (Jems Cardinal Gibbons, The Faith of Our Father, 93rd edition, 1917, p. 58).

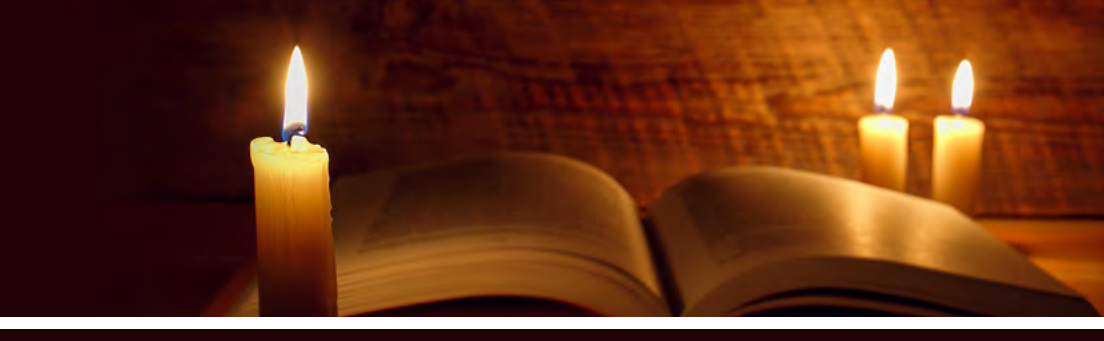
**Churh of Christ mi no pi:** "Ashekhu shi, hipau ghili lo Khristo no ashepe (testimony) tsupuanu (**Mark 2:27**) Pano pipuakeuno "Sabbath ye timi ghenguno mlapuanu, eno Sabbath ghenguno timi mlapuamoke" ipi. Hipau lono ninguno mutsumishei ithulu akeuno Sabbath tsala ye Israel mi ghengu likhino mlapuamoe, Paley eno Hengstenberg pama no ningu pelo puluvepe keu toimoke, hiye timi ghenguno mlapuanike ... tiye alimi alagha ghenguno mlapuanu. Tighenguno ninguno kishekhatsu akeuye Sabbath tsala ye abothu lono shikimithe puatsu ani, eno Eden lono pesu Adam tsupuanu, eno hipau ye timi kumtsu lokughunopu ghenguno ayehza mlatsukeu atighiuke." - Robert Milligan, Scheme of Redemption (St. Louise: The Bethany press, 1962, p. 165.

**Congregationalist mi no pi:** "Khristomi wu Sabbath ipi akeu (Sunday) ye Kuchoyehsu lo kuha, eno akukuho atighimiqono Sabbath ipi kuchekeu kumoke." —Dwight's Theology, vol. 4, p. 401.

**Episcopal mi no pi:** "Sunday (Dies Solis) ye Rommi mino tsala phichekeu (Calendar) khetsunhe tsala ipi chekeuke. Khetsunhe lau pephepe tsukeu tsala apineh dolo atsala atighiu, Khristomiqo no pesu akumlla tsala shichekeuke. Atsala hipau pinyini keu yehza puloshoghi akitheu lomu tsupuamo, momu hipau ye pinyi mayesa ipi khiunomu pipuamo." —"Sunday" A Religious Encyclopedia, vol. 3, (New York: Funk Wagnalls, 1883, p. 2259

**Lutheran mi no pi:** "Ampeu tsala (Sunday) ye Alhou zahkutsu lo kuha, ikemu akukuhou yehkipekuka (authority) lono tsukeuke." — Augsburg Confession of Faith, quoted in Catholic Sabbath Manual, Part 2, Chapter 1, Section D).

**Methodist mi no pi:** Sunday ghili phujulo. Kishieno apineh dolo atsala atighiu pesu akumlla tsa shi ighivekeno tipau ghili puloshoghi akitheu lo khilenomu kimichitsu keu ithumla, momu Khristomi ye atsala tipau pinyi mayesa ipi puakeumu ithumla, momu Judahmi Sabbath hu pekilipesu atsala tipau lo suvetsuake ipikeumu ithumla." — Harris Franklin Rall, Christian Advocate, July 2, 1942.



**Moody Baibel Institute no pi:** "Sabbath ye Eden lono tsughasukeu yehza lakhike, eno tinguno huthu puzu alho lo tishi achenikeu shitsuke. Ahzakutsu abidiu hukuthu lo pikeuno "kumsuchilelu chelo" ipikeu tsa pesu huthu puani. Hipau lono piyetsutsu akeuye Sabbath ye Alhou no Sinai naghuto lono Ahzakutsu 10 atulapha shou yehpukutsukeu zuuno aighive keu pi ani. Ike tishiaye timiqo no ayehza 9 ye itehi kutolo ningu tsughape aphi ipi puzu kishieno ahzakutsu hipau ye nuxavetsu kea?" – D.L. Moody, *Weighed and Wanting*, p.47.

**Presbyterian mi no pi:** "Tihenguno ahzakutsu 10 qhoi ikhivemphi kutolo Sabbath zahkutsu ye tishi puthugho achenani ... Khristo kukutsu lono Sabbath ye tishi alho lo puhamono achenani ipi iqhi kumtotsu puani." – T.C. Blake, D.D., *Theology Condensed*, pp. 474, 475.

**Pentecostal mi no pi:** "Ningu ye kushiye Sunday lono mlla chenikea? Baibel lono ningu vilo Saturday no Ampeu tsala ke ipi kutsu puanike kumo keshea? Puloshoqhi Akitheu lono kumono alaghi kutau lono khokichile hipau ninguno phujukepushi ani." - David A. Womack, "Is Sunday the Lord's day?," *The Pentecostal Evangel*, Aug. 9, 1959, No.2361, p. 3.

**Encyclopedia lono pi:** "Sunday ye Alhou puluchemo kemino apineh dolo atsala atighiu jeh kutsukeu ke, kughengu panonguno atsala hipau lono khetsunhe mlla achenike ghenguno ... Atsala akutsuniu ye Alhou no Pa kutoshi kumughatsu eno shikimithetsu keu tsalake, eno Pa wu lhouxqo pelo atsala tipau akimitheshi pinyi chepenikeushi ahzatsuke. Pa zahkutsu ye kungu--yeghiqha kumtsu lau tsu, eno tipau ye alho lo tishi pinyi achenikeu shitsuke." – *Eadies Biblical Cyclopedia*, 1980 ed. p. 561.

**Hilehi okukumsu eno injuakeu pitsulou**



15



16



17



18



19



20



21



22



23



24



25



26



27

## Akiphi kichekutsu hipau ghi akiphi 27 gholo lakhike.

Akiphi kumtsu lo akumzapu kuchouqo no chhitoi ani, hipauno no eno no kibolomiyo kuxu pekilivetsukulupu anike. Akiphi lakhimu vezuve kevalo.

- Akiphi kichekutsu 15:** Khiuno Khristo ghumikea?
- Akiphi kichekutsu 16:** Aqha lono kungumi tsapeqo
- Akiphi kichekutsu 17:** Alhou no akupughuqo shi
- Akiphi kichekutsu 18:** Ado achipi lono! Tungkupu sukusu piyetsu
- Akiphi kichekutsu 19:** Ashekhau kughathabenikeu
- Akiphi kichekutsu 20:** Tughashi michipu
- Akiphi kichekutsu 21:** Baibel Tungkuputsa lo USA
- Akiphi kichekutsu 22:** "Totimi" kutau lakhi
- Akiphi kichekutsu 23:** Khristo nipu-kulaliu
- Akiphi kichekutsu 24:** Alhou ye ayepukighithimi eno akuka kutau pe akemiyo lau muzusutsu keshea?
- Akiphi kichekutsu 25:** Ningu ye Alhou shou pukhu anima?
- Akiphi kichekutsu 26:** Kikimiye huno pekilivetsu
- Akiphi kichekutsu 27:** Ide ighima

Noye niu Akiphi Kichekutsu-u 14 ithuluvama? Ithulu mono aghi aye, akiyeh tsulo:  
Amazing Facts India, Post Box No 51, Banjara Hills, Hyderabad-500034

Kimiyepe Summary Sheet hipau kishékha mphí zuwuno akíphi phíjúlou. Khókichíle kumtsu akíphi kíkhekutsu lono íthulunani. Chejuno achípiu khókichíle lo sutsulo. **Akíkíhi parentheses lo píyepuakeu (1) no khókichíle achípiu ke.**

**Form típaú píchiveníkeu ghenguno kímíye pu “Adobe Reader” peithalo.**

- 1) **Timi kutomono tughashi michipu ikhiluvae (1)**  
lye Moe
- 2) **Tughashi michipu ye (1)**  
Aqoaho sushoLuku michipuke  
Sunday akimitheshi pinyikeu michipuke  
Alhíkishi kí lo ame yehpe qhítsukeu michipuke
- 3) **Tughashino aqoaho puthupuakeu michipu pe akeu ye (1)**  
United States  
Pope wu híyam  
Europe mí kuqhakulu  
kuthu kuqhape mla akeu
- 4) **Amichipu (mark) ye aphímípi lo chishípuku nani eno kumtsu hethino íthulunani (1)**  
lye Moe
- 5) **Alhou ghi Pa kuka (power) eno Pa yehkípekuka (authority) michipu (mark) ani (1)**  
lye Moe
- 6) **Alhou yehkípekuka (authority) michipu ye (1)**  
Tuqhou kíkíhi akupulumi Khristomíqo tsuníkeu ke  
Amílíjeli lono píkeu ke  
Sabbath pínyíkeu lono pulhokusú eno shíkímíthetsukeu vesulho íkhiLúkuke  
Azulo putsuskeu ke
- 7) **Tughashi ye kishi Alhou yehza kilivetsu kea? (2)**  
Ahzakutsu abídiu lo Sabbath pesu Sunday lo kilísvetsu  
Salhakeu ye axíne kumoe ípi kutsukeu  
Ajulho (image) mílla keu íkhilluve keu
- 8) **Tungkuputsa lo aqhi 42 ye ado khítóhíkeu? (1)**  
Ampe 420  
Ampe kuthuno tuxa  
Atsala 1,260  
Ampe 1,260
- 9) **Tughashi michipu ye kíu lo chishíníepi kea? (2)**  
Aw lo  
Akíchi lo  
Agímúchu lo  
Akíshe lo
- 10) **Alhou míchipu ye kíulo chishíníepi kea? (1)**  
Akíshe lo  
Aw lo  
Tímí míli lo
- 11) **Kungumí kuthu tsape ghólo khíkhiuno tughashi míchipu ghenguno kutughutsu aníkeu? (1)**  
Kungumí atughíu tsape lono  
Kungumí akíníu tsape lono  
Kungumí akuthúu tsape lono

## 12) Tughashi no Alhou do kilivetsukeu ye (2)

Ampe kithe pesu akumla thevekeu tsala shivetsukeu

Alhou kimithe tsala pesu apineh dolo atsala atighiu lo suvetsukeu

Alhou kimithe tsala huthukeu do khetsunhe iloveke lono wo thojiu khetsunhe iloveke kutolo ikhilukepu zuqhu lo putho mta lono wo thojiu putho mta kutolo ikhiLuku

## 13) Tughashi michipu ghenguno Alhou no ningu kutughutsu ani (1)

lye Moe

## 14) Amichipu (sign, mark, seal, eno tokeno goye kuchoyehsu lo kivekutsughu peitha cheni (1)

lye Moe

## 15) Tile Kuchoyehsu lo Sunday akimitheshi pinyikepu pulozah tsupuumoe (1)

Kuchoue Kichileue

## 16) Apinenh dolo akutsunini (Saturday) no Alhou wu Sabbath tsala akimitheke ipi Ino pululuvea, nighi hipau pinyi thuveniake

lye Moe

**Kungu injiu puakeqo achipilo khochile tsulo!**

## AMAZING FACTS

India



**Tilehi kihisuvani keghenguno oje, email eno thepiu kikihi sulou.**

Owu akiphi kichekutsu KUMUSA no ithuluni keghenguno "Sulou" lo inalo.

Oje :			
Owu Email :			
Thepiu kikihi :			
Okungo-a :			
Aphugui, District :	State :	Aghaqhu :	
Pin :	Apunu mpe amqo:	Gender :	

Anile shi no kusutsa nikeu tipau tsulou